



SHAH DEVELOPERS

(PVT). Ltd.



28-Lawrance / Mozang Road, Lahore, Pakistan
Ph: 92-42-36375855-56, Fax: 92-42-36375301
email:shahdeveloper80@gmail.com

SITE OFFICE
Office 7, First Floor Business Arcade
Defence More Lahore

INTRODUCTION

Since 1998

With the hard work and dedication, Shah Developers (Pvt) Ltd. Has become a major player in the construction and development sector. We have delivered projects for both the private and the Government sector.

Expertise:

Road Construction and Road Safety Division

Commercial Buildings

Town Planning

Pedestrian Bridges

Our Mission:

Shah Developers (Pvt) Ltd. Aims to become one of the Pakistan's greatest builders and developers. We aim to deliver projects all over Pakistan.



RUNWAY

MARKINGS

Shah Developers (Pvt.) road safety business is at the forefront of Pakistan's road safety industry with the induction of state of the art latest road marking application machines and products of international standards. Shah Developers (Pvt.) continued its efforts for creating road safety awareness by providing unmatched services to the road users. Shah Developers (Pvt.) Runway Markings have been used all over the country and our services have been acknowledged in almost all the Air Bases and Airports of Civil Aviation Authority.



OTHER ROAD

MARKING PAINTS

Shah Developers (Pvt.) Road Safety offers a full range of Acrylic and Alkyd based pavement-marking paints for applications such as. Road Construction, Buildings, Parking lots, play areas, etc.



CATAPHOS CHLORINATED

RUBBER (CR) PAINT

Shah Developers (Pvt.) Road Safety Cataphos CR is an excellent pavement marking Paint for asphalt or concrete, which meets the requirements of AASHTO specifications M-248-90, type N, which is manufactured according to quality standards certified under ISO 9002. This product is fast drying and highly durable. It has excellent resistance to abrasion, chemicals, salt and water, It can be applied with or without glassbeads. Its salient features are:

- ♦ Durable and fast drying
- ♦ Good chemical and water resistance
- ♦ Can be applied with drop on Ballotini (glass beads) to provide reflective characteristics
- ♦ Plasticized Chlorinated Rubber base
- ♦ Ease of application, can be applied by roller or spray machine
- ♦ Available in White and Yellow Colors

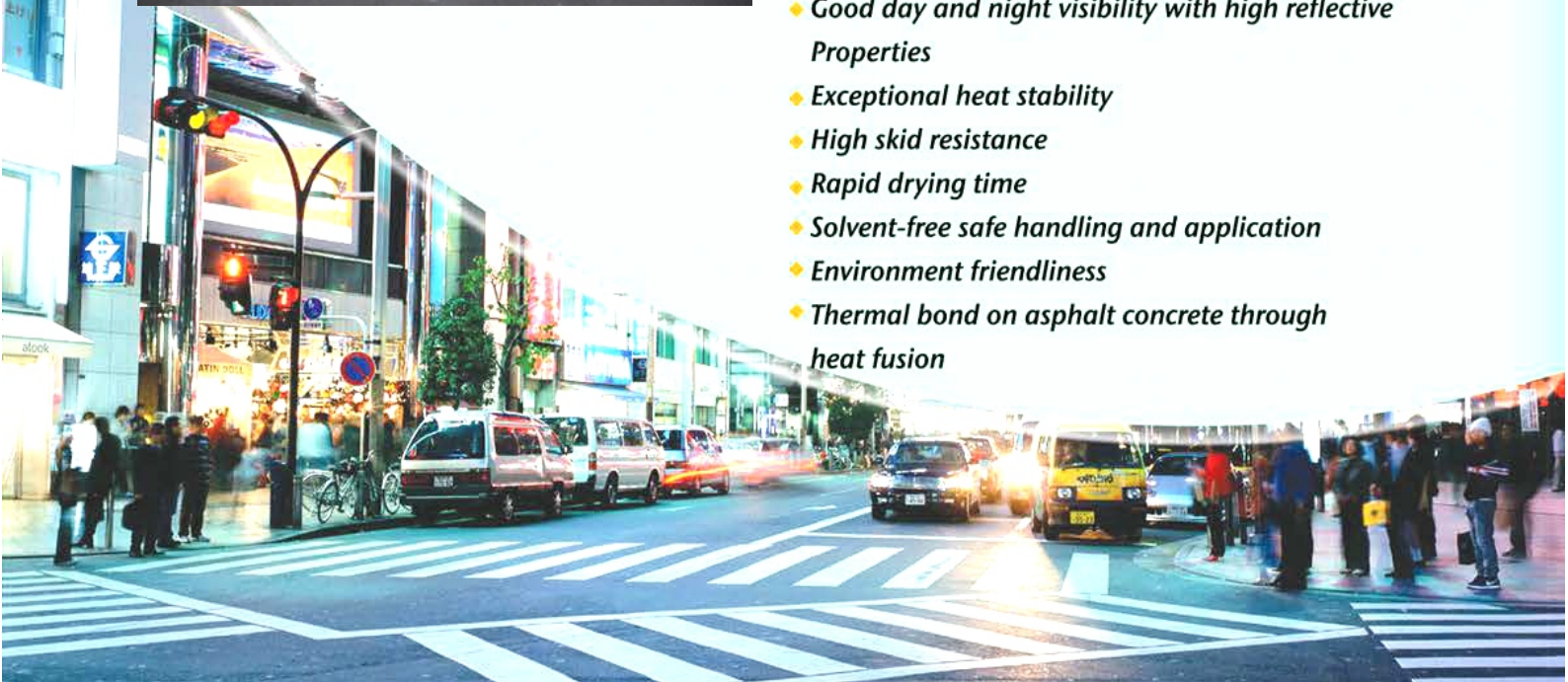


CATAPHOS TP

THERMOPLASTIC

Shah Developers (Pvt.) Road safety Cataphos TP hot applied is a premium product for road marking. It has very high durability and reflective properties. The appearance of the finished markings have a uniform surface, crisp edges with minimum spillovers and clean cut-off. It meets straightness requirements and confirms to drawings. Inclusion of highly effective glass beads conforming to BS 6088 in the product and sprinkling during application makes it the most reflective road-marking product available. This material is manufactured according to BS 3262 at exceptionally high quality standards. Cataphos TP offers the following features:

- ♦ Long-term durability
- ♦ Good day and night visibility with high reflective Properties
- ♦ Exceptional heat stability
- ♦ High skid resistance
- ♦ Rapid drying time
- ♦ Solvent-free safe handling and application
- ♦ Environment friendliness
- ♦ Thermal bond on asphalt concrete through heat fusion



TECHNICAL DATA SHEET

Cataphos CR Road & Concrete Marking Paint

PRODUCT DESCRIPTION

Single Pack, ready for use, cold cured with plasticized & chlorinated rubber compound

DESIGN USAGE

A quick drying paint having good chemical and water resistance

Suitable for a wide range of road and concrete marking purposes

Ideal binder for ballast (Glass beads) to provide reflectors centre or edge line

PHYSICAL DATA

Recommended Application Data and Theoretical Coverage	2.2 - 2.5 m ² / ltr at 100 micron DFT in Theoretical coverage
Type	Chlorinated Rubber Based
Flash Point	23°C
Drying Time	15 -20 mins (depending on weather)
Dry Film Thickness	100 microns (Depending on Road Surface)
Opacity (CR%)	>80
Viscosity at 25C, Kerb Units	90~100 KU
Color	Yellow, White, Black and Prim Rose Yellow
Packing	20 litres and 4 Litres
Traffic opening time	Minimum 1 hour (Depending on weather)
Mixing Ratio	Not Applicable
Pot Life	Not Applicable

ADDITIONAL INFORMATION

Thinner & Cleaner	Thinner T1 (285000-9000)
Product Reference	510200
Storage Instruction	Store in a cool shaded dry area
Shelf Life	As long as the container is kept firmly sealed and stored under normal conditions the material can be kept for 6 months

SURFACE PREPARATION

The life-span and performance is directly related to the degree of surface preparation

Road surface should be dry and free from mud, sand, oil, foreign matter or an loose substrate or matter

When laying on old paint check if the film is in good condition if not then it should be removed prior to new laying

APPLICATION

Cataphos CR has particularly good ease of application properties and is supplied ready for use suitable for both application by both brush and spray methods and by roller also

One coat at the recommended coverage is normally adequate

Avoid application soon after rain or shower as it will result in peeling-off due to release of moisture from the substrate

FIRST AID

Eyes: In the event of accidental splashes, flush eyes with water immediately and obtain medical advice.

Skin: Wash skin thoroughly with soap and water or approved industrial cleaner. DO NOT USE solvent or thinner.

Inhalation: Remove to fresh air, loosen collar and keep patient rested.

Ingestion: In case of accidental ingestion, DO NOT INDUCE VOMITING. Obtain immediate medical attention.

DISCLAIMER

The information provided on this data sheet is not intended to be completed and is provided as general advice only. It is the responsibility of the user to ensure that the product is suitable for purpose for which he wishes to use it. As we have no control over the treatment of the product, the standard of surface preparation of the substrate, or other factors affecting the use of this product, we are not responsible for its performance nor would we accept any liability whatsoever or howsoever arising from the use of this product unless specifically agreed to in writing by us. The information contained in this data sheet may be modified by us from time to time, and without notice, in the light of our experience and continuous product development.

Road Construction & Gantry

*Shah Developers / Construction Group will grow to be a one of the largest privately-held construction service company in Pakistan.
With us, you can expect excellence in all of our services.*

Highway / Motorways

Road Construction.

Site Work

Asphalt Road

Cat eyes / Studs Installation

Gantries Construction

Buildings / Government Projects

Building Constructions

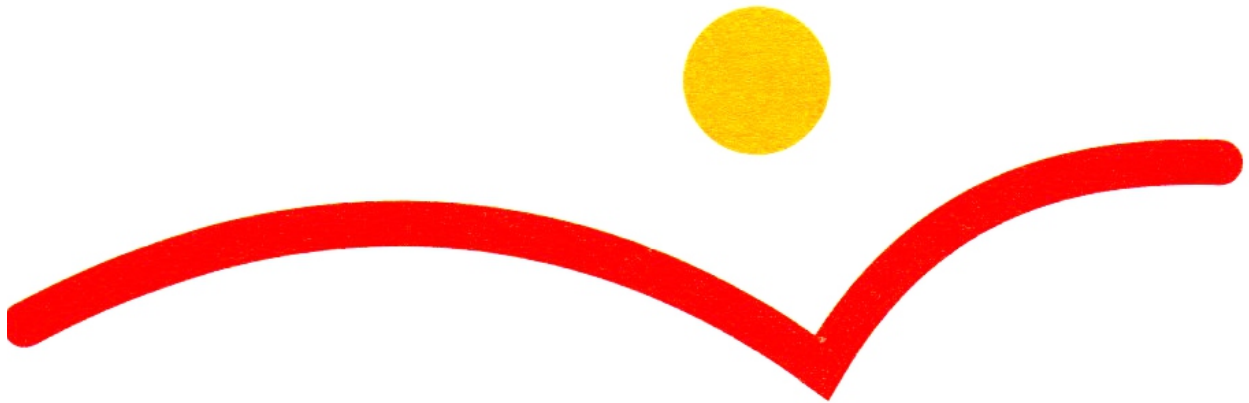
Commercial Road Construction

Government Projects



Shah Developers Construction has tried to earn a high reputation for producing consistent, high-quality results, whether Government Project, Performing commercial site development, or building an entire length of roadway, Bridges & Gantries. Shah Developers has the worth & capacity of experienced team and equipment to perform each project quickly, Safely and cost-efficiently.

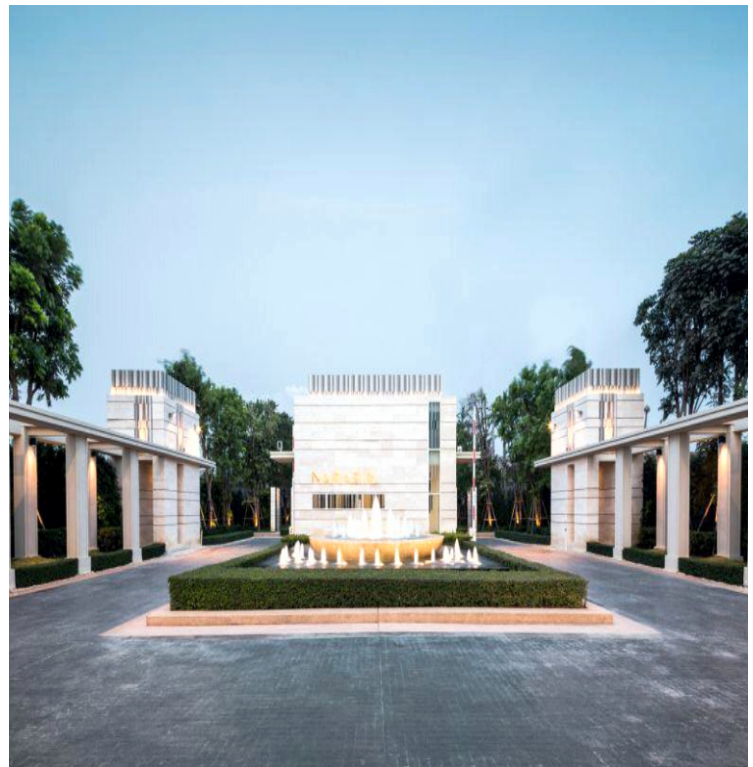




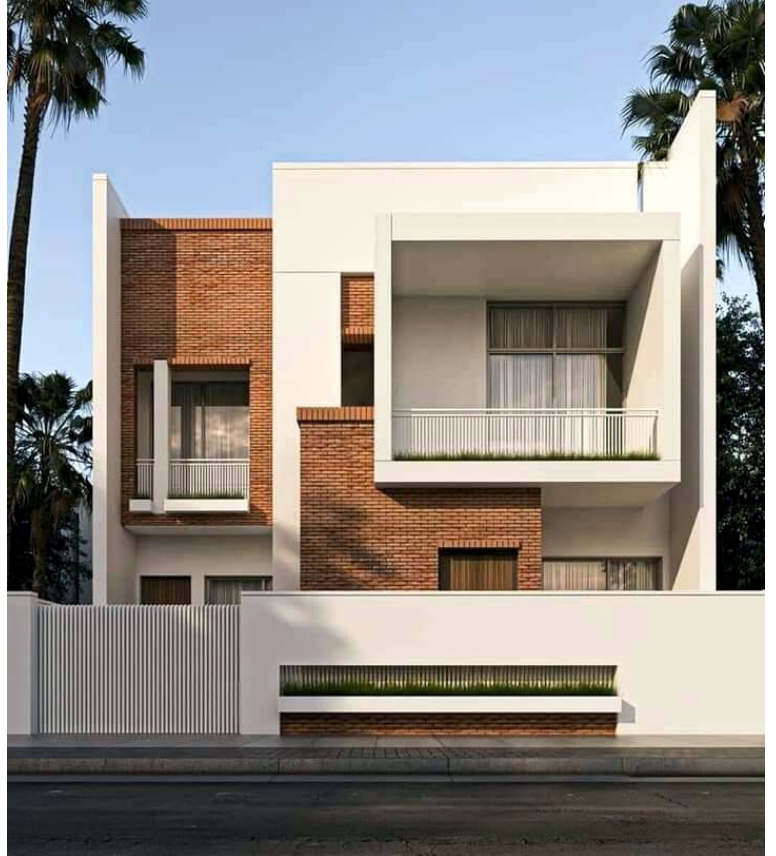
SHAH DEVELOPERS
(PVT). Ltd.

*Major
Projects*

KING WOOD GARDENS HOUSING SCHEME



PALM VILLAS



NHA

CHIAYANWALI PEDESTRIAN BRIDGE



ADA NULLAH AND WALTON ROAD PEDESTRIAN BRIDGE



REPAIR MAINTANCE OKARA ROAD NHA



NATIONAL BANK OF PAKISTAN

